

QUAD

STONE SKIMMER LID



HIDDEN SAFETY

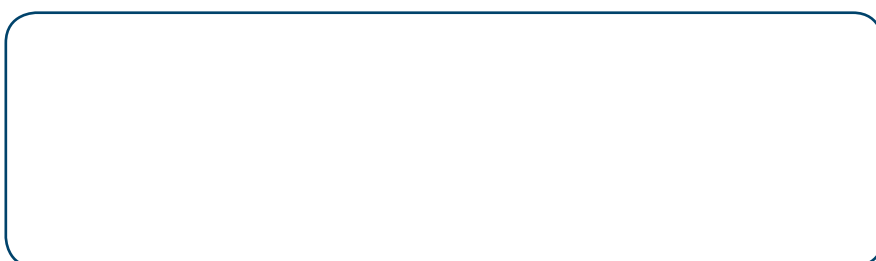
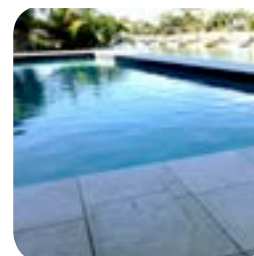
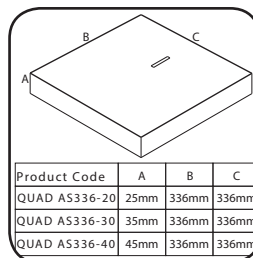
- Attractive Registered Design protected by Australian Patent. Matches coping with a flush minimalist finish.
- Safe for children and pool builders. Complies with Australian Standard AS 1926.3 2010 Swimming Pool Safety - Water Recirculation Systems.

- Water Jet manufacturing process guarantees tight tolerances and a great finish.



- Durable marine grade 316 stainless steel tray means you won't get call backs for cracked or chipped lids.
- Independent and removable, with no difference in electrical potential.

"I just love the clean modern look of my pool paving"



SKIMMER LIDS
PTY LTD
HIDDEN SAFETY

AUSTRALIAN PATENT # 2014100682 #2014902338
REGISTERED DESIGN #201412988

STONE, GRANITE, PORCELAIN,
WOOD, TERRACOTTA,
CONCRETE OR CERAMIC

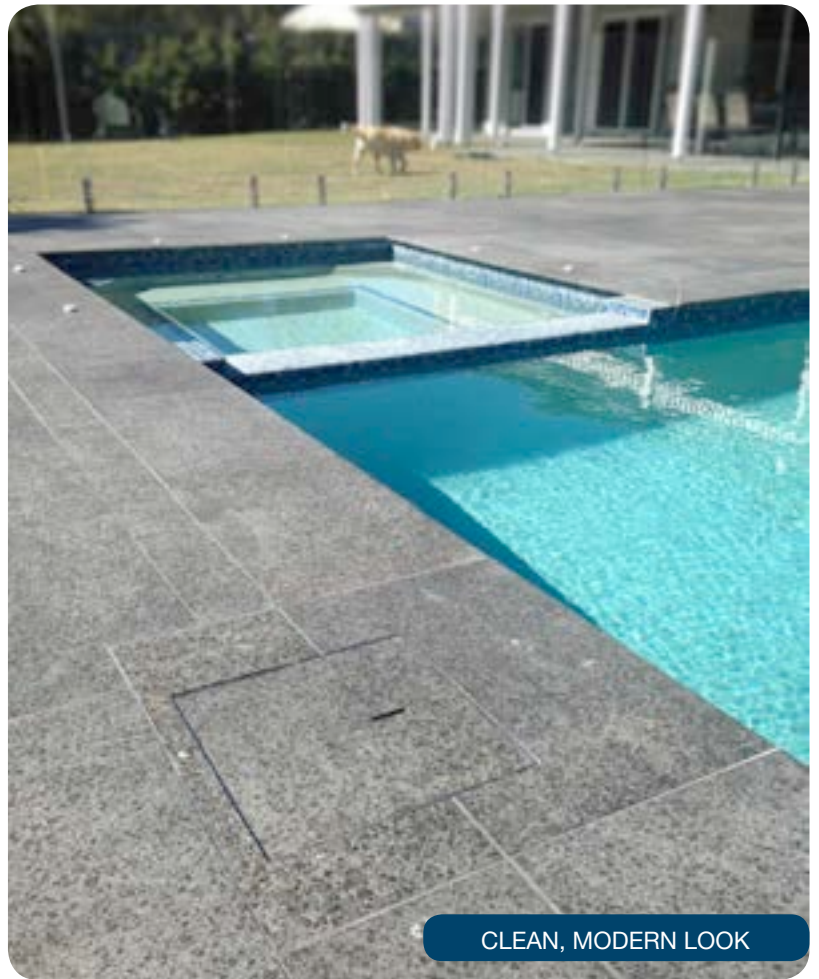


SEAMLESS & FLUSH

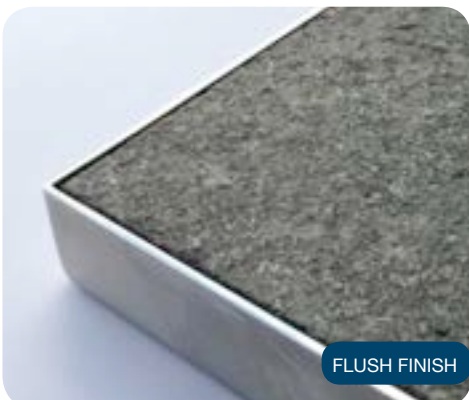
The *QUAD Skimmer Lid* comprises a 2mm thick 316 marine grade stainless steel tray with the selected paving matched and fitted as an infill. A key-way slot is cut into the infill prior to assembly. The tray supports and protects it from chipping and cracking. Possible breakage is also minimised.

The dimensions of the square tray are 336 x 336 mm. The depth of the tray can be chosen depending on the thickness of the paving material to be inserted. Three depths are available as standard: 25mm (to suit paving material 20mm or less), 35mm (to suit paving material 30mm or less) and 45mm (to suit paving material 40mm or less). Custom depths are also available.

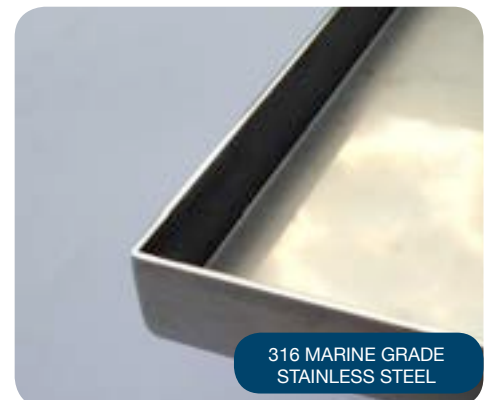
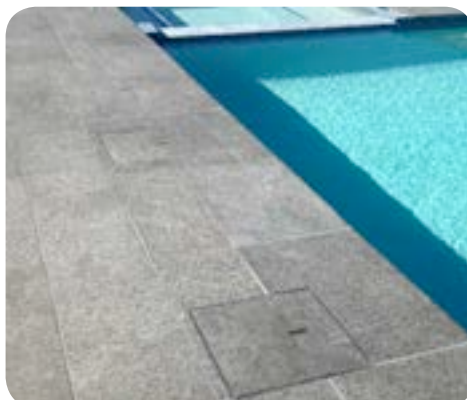
Included with the lid is a heavy duty stainless steel key that allows controlled removal of the lid. This key should be kept out of reach of children so they cannot access the skimmer box. This keyed access meets the *Australian Standard AS 1926.3-2010* required for skimmer box lid certification. The slot or key-way that is cut into the paving material also provides adequate ventilation, yet is not a trip hazard.



CLEAN, MODERN LOOK



FLUSH FINISH



316 MARINE GRADE
STAINLESS STEEL